



DATASHEET

AUTOROUTING

Generate routing strategies specific to your PCB, to eliminate blockers and set up autorouting for optimum results.

TOP BENEFITS

- Consistent, built-in autorouting solution with automatic routing strategy generation that you can adjust to your precise needs.
- Experiment what-if style, with as many routing strategies as you like.
- Re-use routing strategies in other designs – a big time-saver when your designs have common features.
- You can mix hand routing, autorouting and auto-interactive routing any way you like, to help you do it rapidly and accurately.
- You can get started without specialist knowledge – but you can also share your expertise to help other engineers and they can share theirs with you, to get even better results.

www.ecadstar.com

©Zuken Inc. All rights reserved.

AUTOROUTING WITH ROUTING CONSULTANT AND ROUTING STRATEGIES: BASICS

Generate routing strategies specific to your PCB, to eliminate blockers and set up autorouting for optimum results.

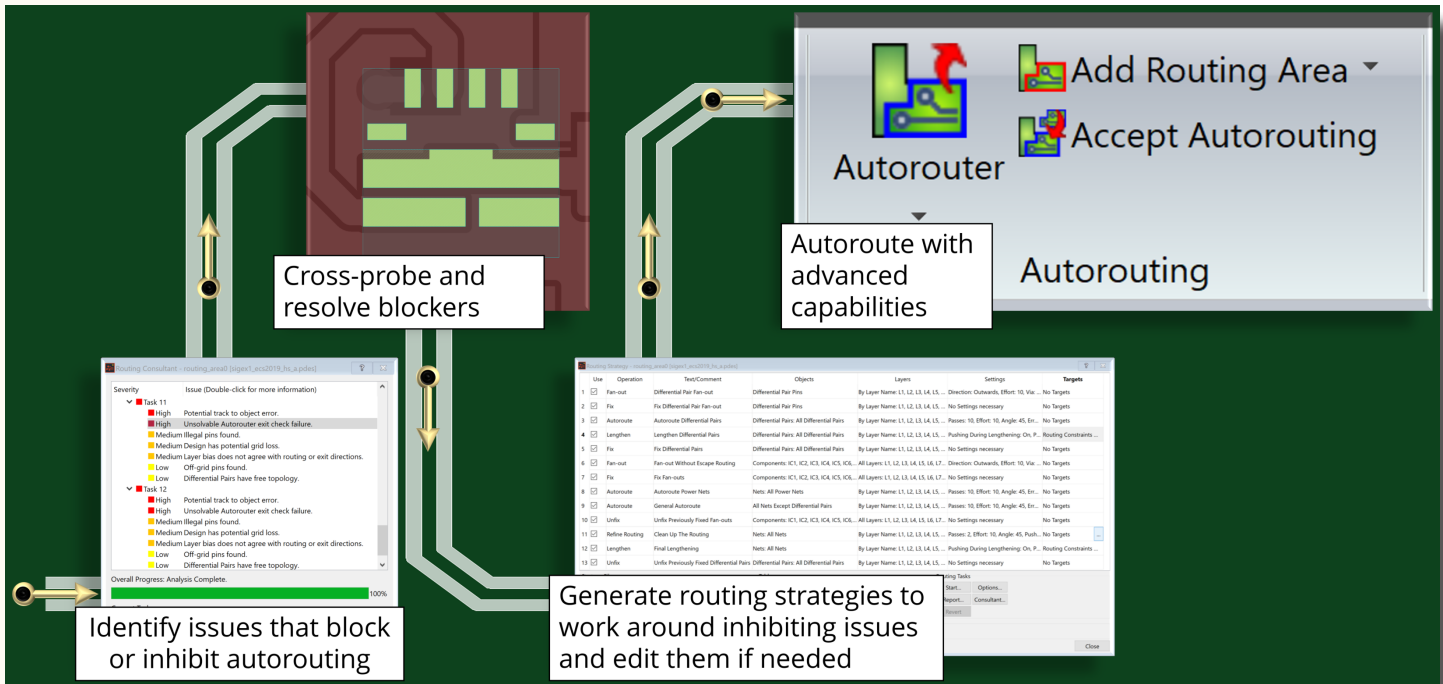


FIGURE 1: Autorouting with Routing Consultant: basic process

ROUTING STRATEGY AND AUTOROUTING HIGHLIGHTS

Review routing strategy with full report and cross-probe

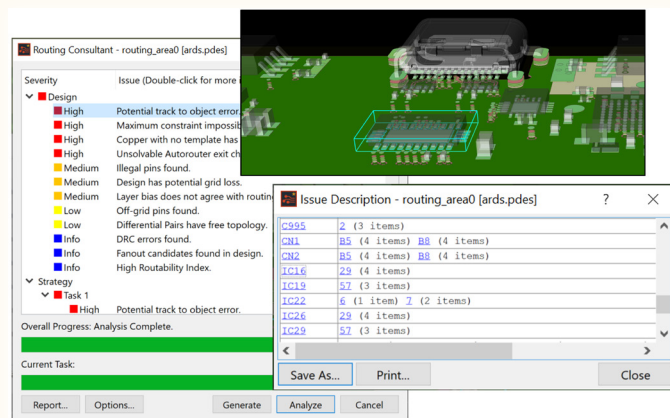


FIGURE 2: Reviewing report with cross-probe

There's a full report of all steps to provide structure to both individual and team reviews.

Engineers can share their know-how and give each other the benefit of their experience.

Route fan-out automatically, including differential and BGA

Keeps fan-out style consistent for selected items.

Considers differential pair requirements.

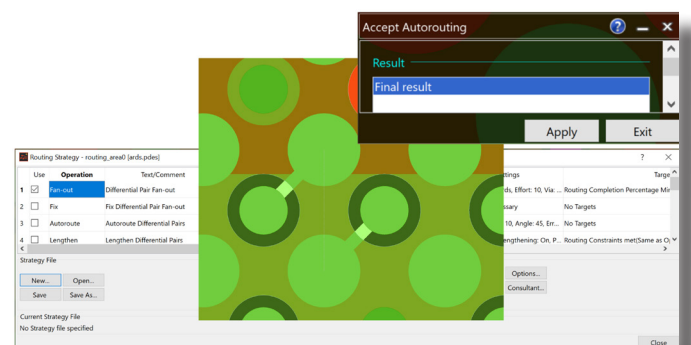


FIGURE 3: Differential fan-out generated from routing strategy

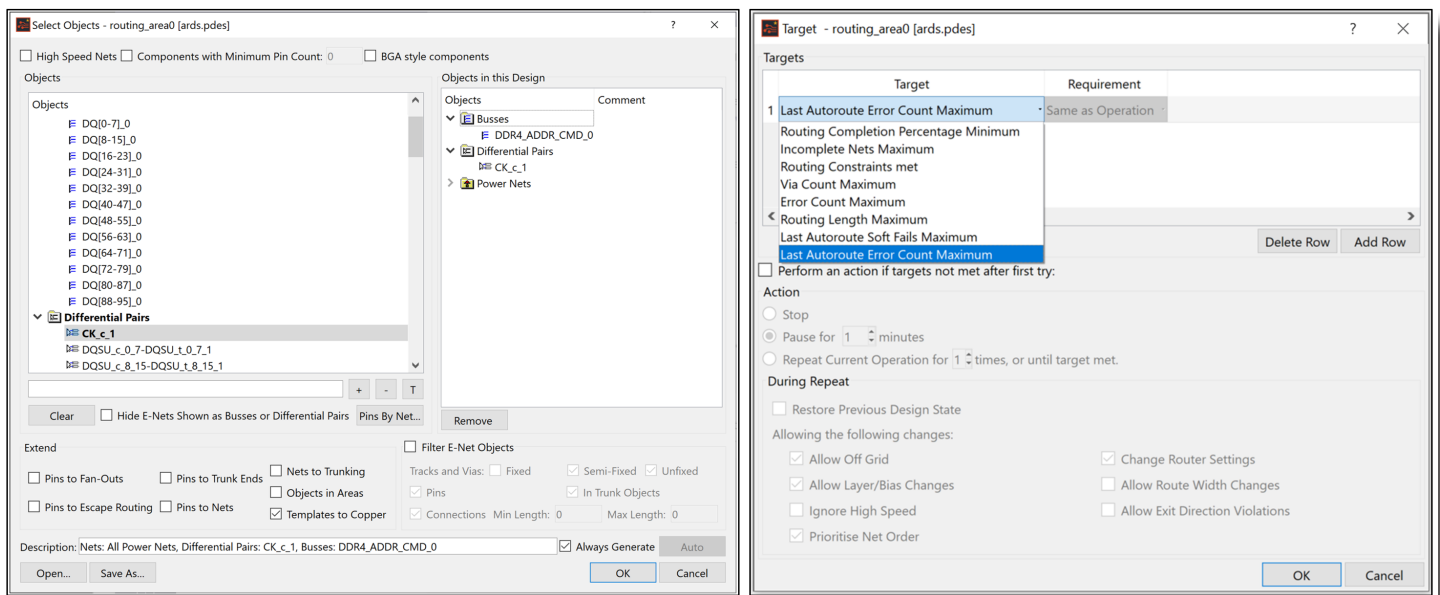


FIGURE 4: Selections and targets for routing strategy steps

Refine selections and route to targets

Routing strategy steps are generated with suggested selections. These are the selected design objects the steps will work on. You can edit these as much as you like.

Targets are the objectives of routing strategy steps. When they are met, autorouting moves on to the next step. A step can have multiple targets.

Assisted end routing

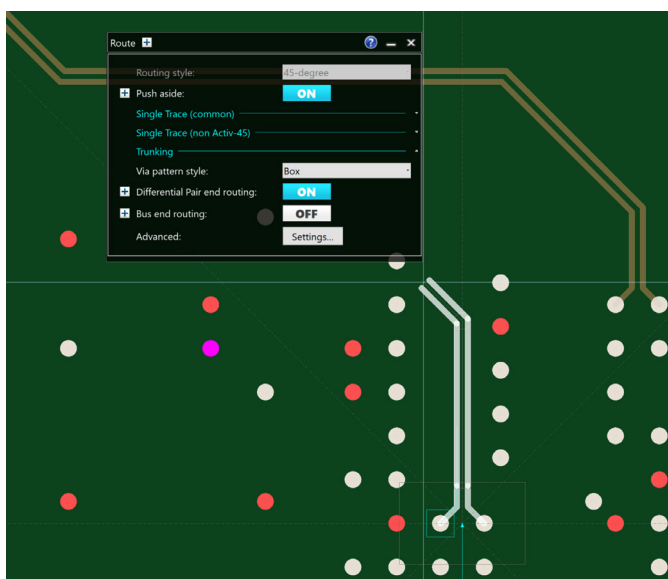


FIGURE 5: Autorouting features are embedded in interactive routing tools

The ends of this differential DDR4 strobe have been routed automatically.

IN BRIEF: WHAT AUTOROUTING ADDS TO YOUR SOLUTION

Autorouting, together with Routing Consultant and Routing Strategies provide a different way to look at routing tasks. You can review knowledge, preserve it and re-use it, automating common design tasks so they're addressed in a consistent way. That reduces the risks of re-inventing an approach.

When critical signal layout requires your full attention, you can mix your skill with as much or as little automation as you like, to create PCBs your own way.

